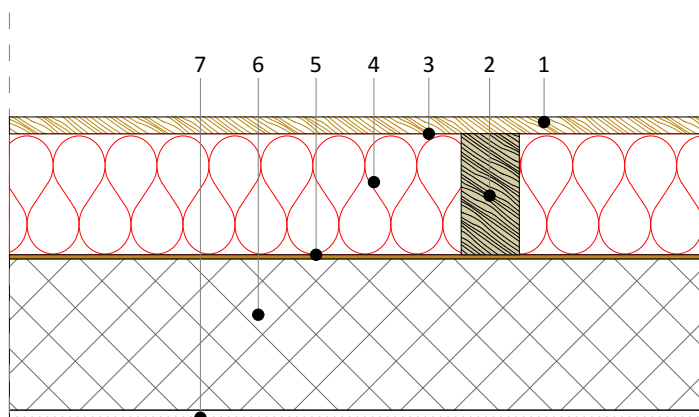




## R-02 Detali i pllakes se Kulmit



- 1 - Derrasi 2 cm
- 2 - Tra druri 8x16 cm
- 3 - Folje difuzive
- 4 - Lesh Guri 16cm
- 5 - Barrierë kundër avullit
- 6 - Pllaka betonarme 20cm
- 7 - Suvatim

|  |                     |                          |                   |                  |      |
|--|---------------------|--------------------------|-------------------|------------------|------|
| Emri i Projektit:  |                     |                          | Përpjesa          | Nr. i vizatimit  | Vula |
| Consulting Company for Development of detailed energy audit reports, Detailed Designs, Technical Specification   |                     |                          | 1:10              | A.15             |      |
| Financuar nga:   | Gjendja ekzistuese  | Arkitektura              | Vizatuar nga:     | Kontrolluar nga: |      |
|  <b>FKEE</b><br><small>FONDI I KOSOVËS PËR EFICIENCË TË ENERJESHË<br/>KOSOVO FUND FOR ENERGY EFFICIENCY<br/>KOSOVO ENERGY EFFICIENCY FUND</small> |                     |                          | D.M               | Xh.G             |      |
| Projektuar nga:  | Emri i objektit:    | SHFMU "Shtjefen Gjeqovi" | Vendi:            | Data :           |      |
|  <b>ALB-ARCHITECT</b><br><small>DESIGN<br/>CONSTRUCTION<br/>PROJECT MANAGEMENT<br/>TECHNICAL CONSULTING</small>                                   |                     |                          | Lipjan            | Shkurt 2024      |      |
|  | Titulli i vizatimit | Detali i kulmit R-02     | Formati i fletës: | Nënshkrimi       |      |
|  |                     |                          | A4                |                  |      |